



# NEW MEXICO

## DARK HORSE TRAINING CENTER NM (DHTC)



### Diverse Landscape of Desert and Mountainous Terrain

Resting at 7,000ft of elevation, and 25 minutes from Sante Fe, NM, Asymmetric Solutions Dark Horse Training Center is a leading provider in military and law enforcement training. DHTC is surrounded by Carson National Forest. Located in the high desert of Rio Arriba County, NM. DHTC provided readiness to forces conducting Deployment for Training (DFT), Realistic Military Training (RMT) and Full Mission Profile (FMP) exercises located at numerous Asymmetric Solutions off-site targets.

### DARK HORSE RANCH SUMMARY

- 785 Acre Site
- Additional 4,735 Acres of Low Regulation Accessible Training Areas
- Desert and Mountainous Terrain
- One hundred-plus miles of off-road trail systems
- High-angle shooting
- Vertical Mobility
- Rocket Ranges
- Heavy Machine Gun Ranges
- Live fire foot patrol ranges
- Mortar range (Blue Death)
- 40mm range (Cheeto puffs)





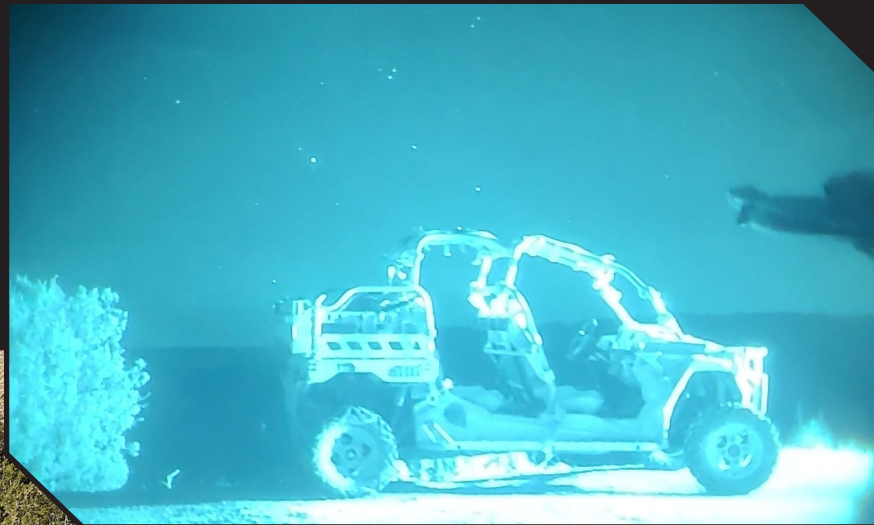
## UNRESTRICTED AIRSPACE AND ORDINANCE TESTING

DHTC provides the unrestricted space to fly, drop ordinance and focus on a unit's ISR (Intelligence, Surveillance, and Reconnaissance) support capabilities in providing real-time situational awareness and intelligence gathering during training exercises.

Deploying unmanned aerial systems (UASs) equipped with advanced sensors and cameras to deliver aerial reconnaissance and surveillance support for mission planning and execution during DFT, RMT, and FMPs

## OFF-ROAD TRAILS

DHTC offers hundreds of miles of off-road trails that range from open desert and sandy trails to rocky, wooded, and large mesas and alpine peaks that form the southernmost precipice of the Rocky Mountains.



## MEDICAL TRAINING

DHTC provides the terrain, climate, and elevation needed to expose and familiarize medics with the skills needed to support their units in a summer and winter wilderness combat environment.



## NATURAL BACKSTOPS

Asymmetric Solutions DHTC has a unique landscape that provides natural backstops to employ heavy machine guns and rockets at varying distances while focused on weapons employment or small unit tactics (SUT)



## MARKSMANSHIP

Asymmetric Solution Dark Horse Training Center is unlike any tactical training facility on earth. More than 665 acres and multiple ranges are dedicated to marksmanship and tactical training. Its natural backdrops combined with 360 degrees of training area make it an ideal training facility for perfecting your craft when considering the effects of vertical and angular distortion, effects of elevation, and effects of weather.





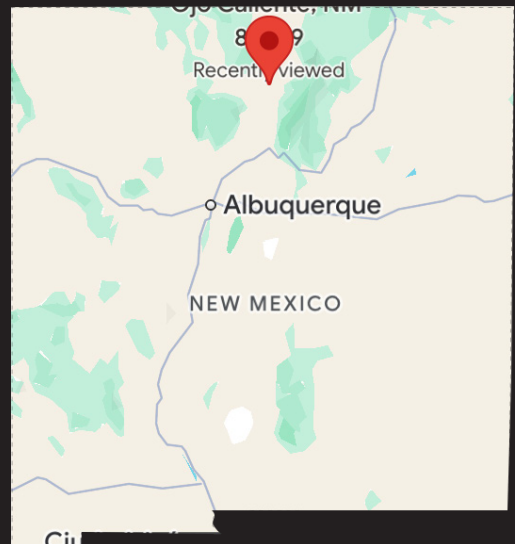


## HORSEMANSHIP /ANIMAL PACKING:

DHTC consists of unique and arduous terrain that aids in alternative methods of transporting crew-served weapons, ammunition, supplies, and wounded personnel to and from areas inaccessible to mechanized and air mobile transportation.

## ASYMMETRIC SOLUTIONS

ASUSA Professional, LLC (Asymmetric Solutions), is a distinguished Certified Service-Disabled Veteran-Owned Small Business (SDVOSB) comprising combat-decorated former Special Operations Forces (SOF) Operators, elite tacticians from Other Government Agencies (OGA), and seasoned Special Weapons and Tactics (SWAT) Law Enforcement Officers. Our instructors bring a wealth of knowledge and expertise derived directly from their extensive real-world experiences, ensuring unparalleled training delivery. Profile (FMP) exercises located at numerous Asymmetric Solutions off-site targets.



## CONTACT

844-851-0911 | [info@asusa1.com](mailto:info@asusa1.com)  
[WWW.ASUSA1.COM](http://WWW.ASUSA1.COM)

